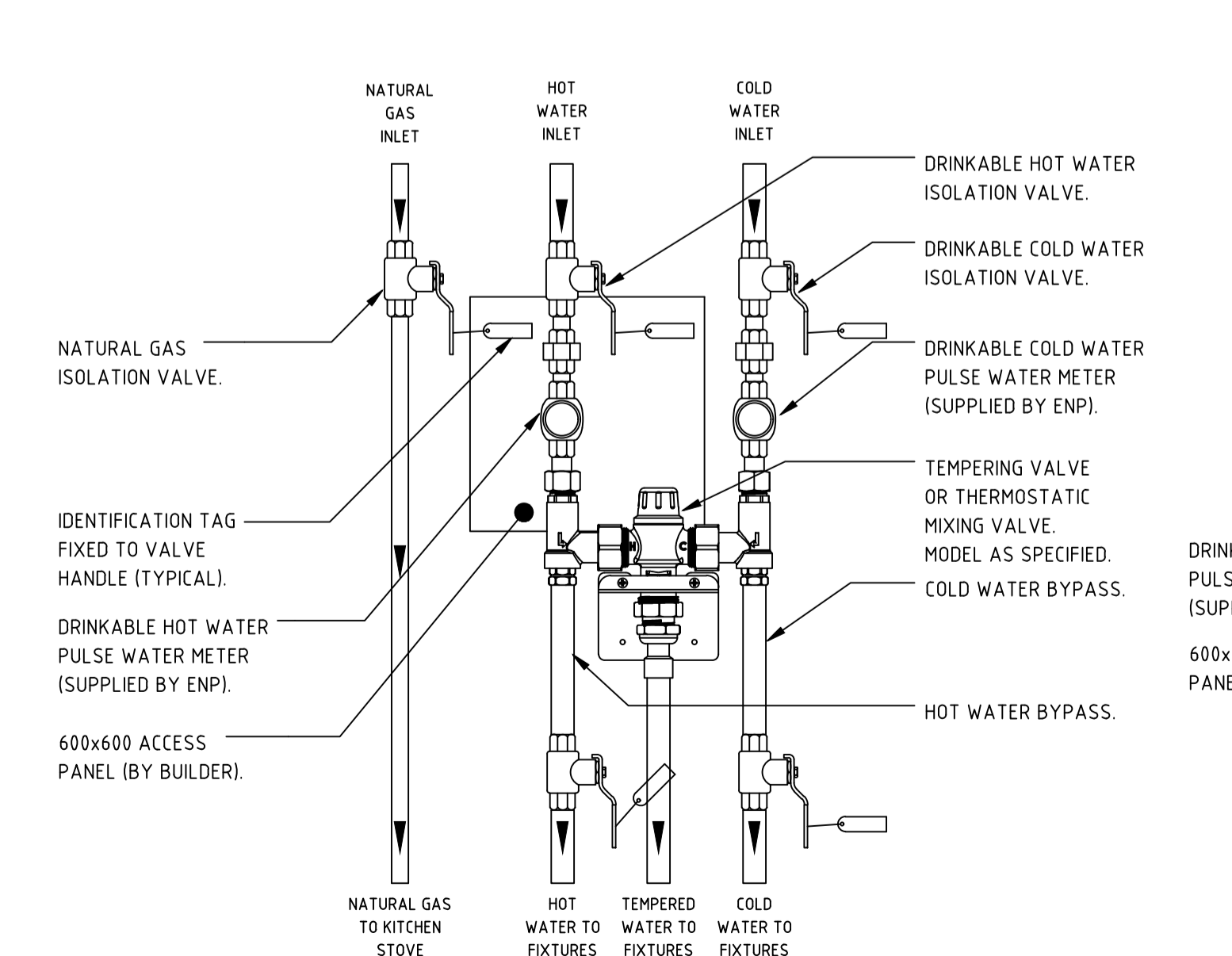
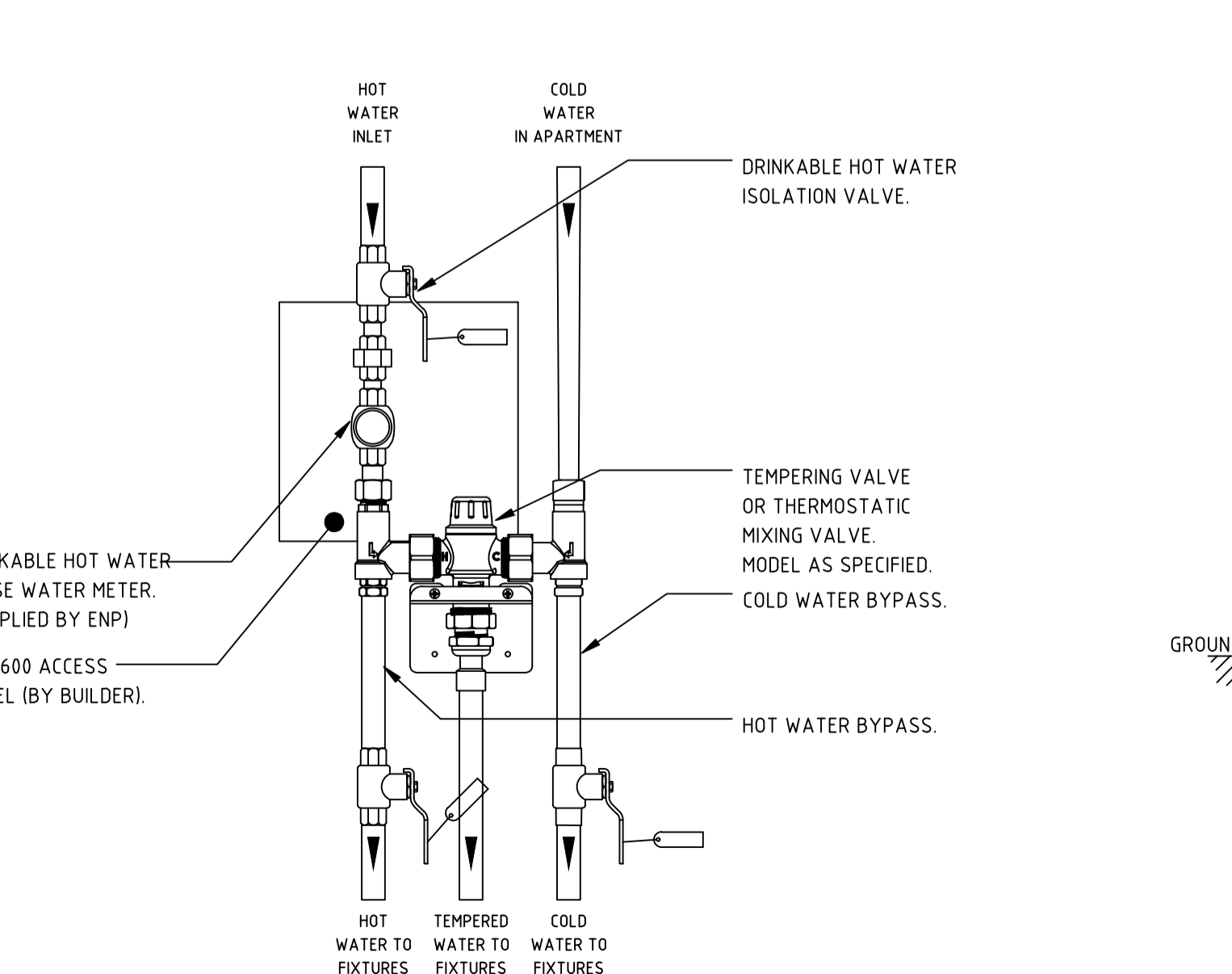


TYPICAL LAUNDRY WASTE AND WATER ARRANGEMENT DETAIL
NOT TO SCALE FOR INFORMATION ONLY

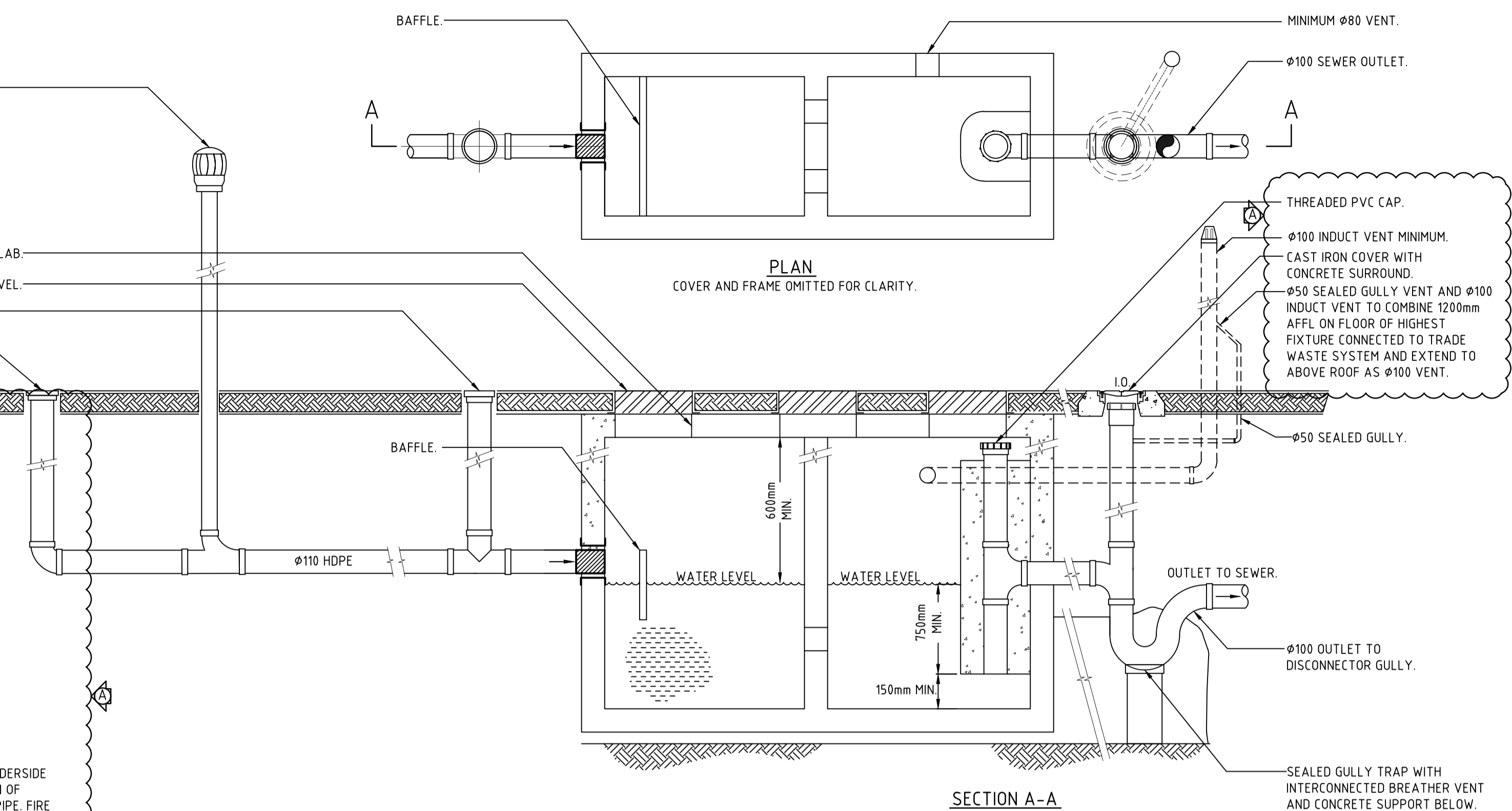


TYPICAL WATER METER AND VALVE ASSEMBLY (WMA)
NOT TO SCALE FOR INFORMATION ONLY

TYPICAL MECHANICAL PROTECTION IN CARPARK DETAIL
NOT TO SCALE FOR INFORMATION ONLY

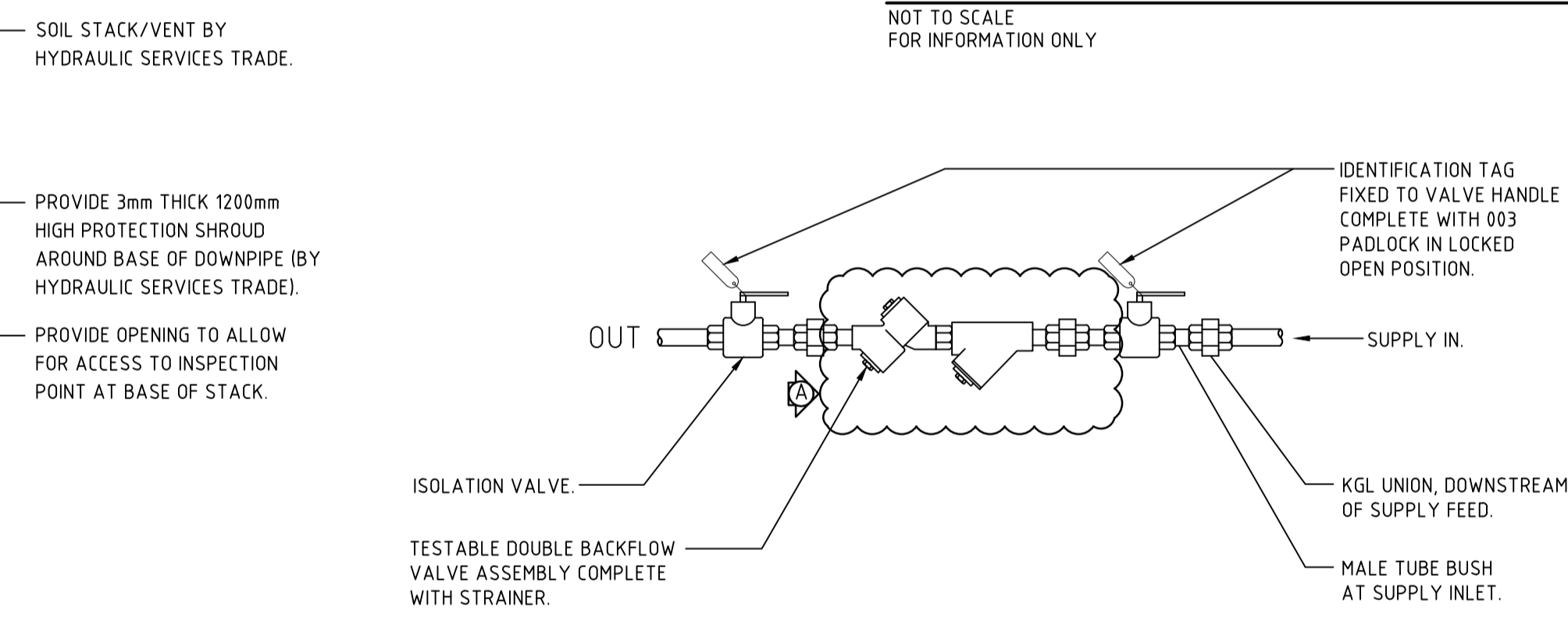


TYPICAL HOT WATER METER AND VALVE ASSEMBLY (HWMA)
NOT TO SCALE FOR INFORMATION ONLY

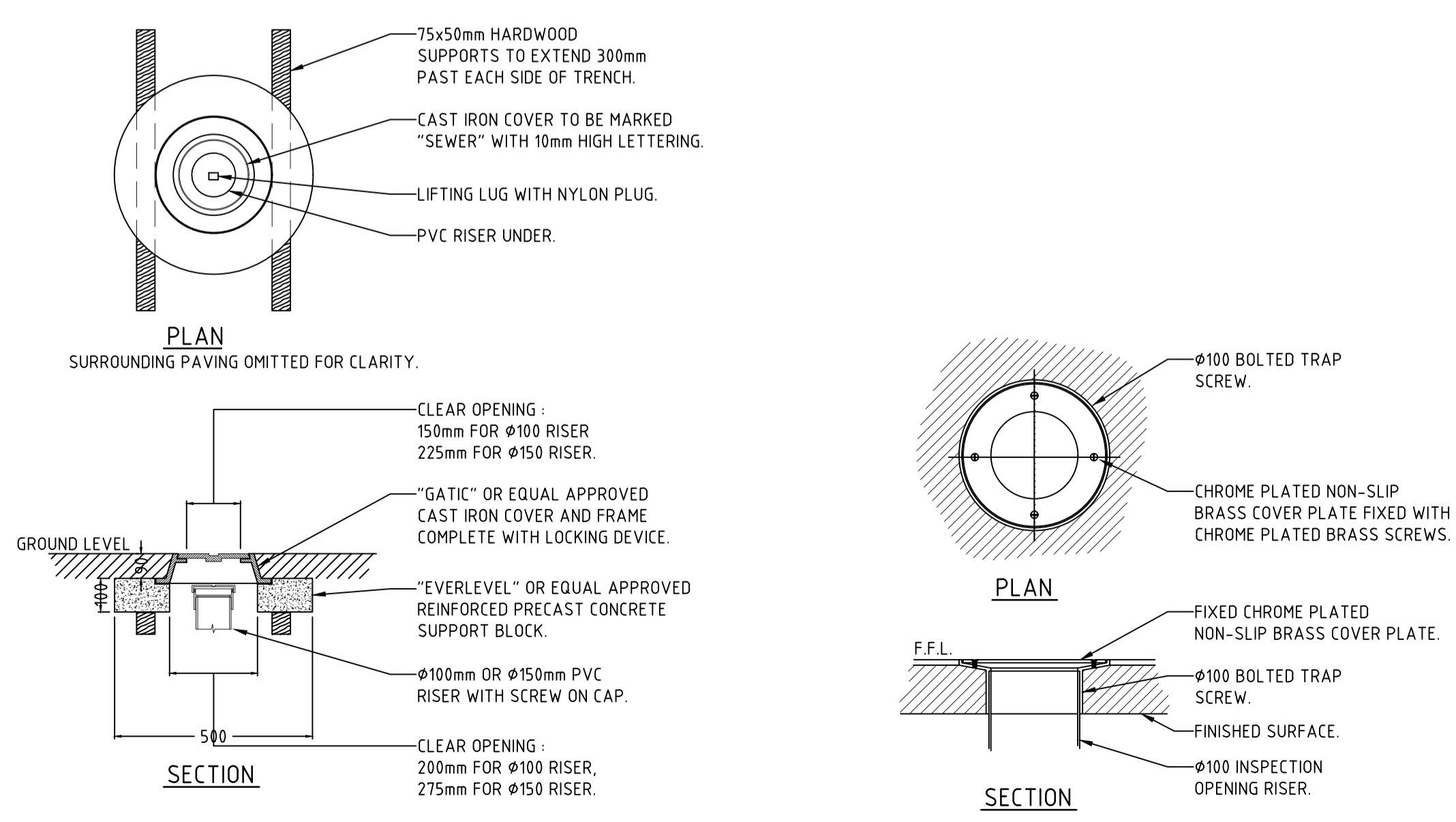


- NOTES:**
1. VENT TERMINATIONS MUST COMPLY WITH AS/NZS 3500.2:2015 SECTION 6.8.4.
 2. SEALED GULLY BREATHER MAY INTERCONNECT WITH INDUCT VENT ONLY. 300mm ABOVE LOWEST FIXTURE CONNECTED TO ARRESTOR.
 3. 100mm WIND DRIVEN TURBINE VENT FITTED TO UPSTREAM TRADE WASTE HEAD VENT ABOVE ROOF.
 4. TAP WITH TESTABLE DOUBLE CHECK VALVE REQUIRED WITHIN 5.0m OF ARRESTOR.
 5. ARRESTOR NOT TO BE LOCATED IN ROADWAYS.
 6. ALL COVERS AND LIDS MUST CONFORM WITH AS3996-2006 AND COMPLY WITH THE REQUIRED DESIGN LOADING.

2400L TRADE WASTE GREASE ARRESTOR DETAIL
NOT TO SCALE FOR INFORMATION ONLY



TESTABLE DOUBLE CHECK VALVE ASSEMBLY DETAIL
NOT TO SCALE FOR INFORMATION ONLY



EXTERNAL SURFACE INSPECTION COVER DETAIL
NOT TO SCALE FOR INFORMATION ONLY

INTERNAL INSPECTION COVER DETAIL
NOT TO SCALE FOR INFORMATION ONLY

CONSTRUCTION ISSUE

A		CONSTRUCTION ISSUE	21.09.18	AS
REV	NO	DESCRIPTION	DATE	CHK'D
LUCID CONSULTING AUSTRALIA Level 3/169 Pirie St Adelaide SA 5000 Phone: (08) 8407 9700 Email: adelaide@lucidconsulting.com.au				
CLIENT CITIFY bfc				
PROJECT THE WILLCOX APARTMENTS 117 PROSPECT ROAD, PROSPECT				
DRAWING DETAILS				
HYDRAULIC SERVICES				
SCALE NTS@A1	DATE SEPTEMBER 2018		No. IN SET	
DESIGNED JZ	DRAWN JZ/ML		17 OF 17	
	DRAWING NUMBER LCE13523-H17		REVISION A	